

## BIOS BOOT LOGO AND STRINGS CUSTOMIZATION

### Revision History

Revision	Date	Author	Changes
1.0	22 <sup>th</sup> September 2015	M.D.M.	First release
1.1	23 <sup>rd</sup> December 2015	M.D.M.	Minor corrections
1.2	17 <sup>th</sup> May 2018	G.G.	Updated document template

All rights reserved. All information contained in this document is proprietary and confidential material of SECO S.p.A.

WWW.SECO.COM

AREZZO



Qseven

MILAN



COM Express

FRANKFURT



SBC



SMARC

BOSTON



ETX / XTX

BANGALORE



Carrier board

TAIPEI



Services & Solutions

## 1 Introduction

---

By default, a black logo is displayed in the background during the boot phase.

In order to customise the BIOS file, programming a logo and a string to be shown during the boot phase, it is necessary to have a PC running Windows and the following software, downloadable from the SECO product's page (software section):

- **H2OEZE-W**                      Insyde Customisation tool for Windows OS
- BIOS image file

Moreover, it is necessary to have a File containing the LOGO image.

**WARNING:** H2OEZE-W is a very powerful tool, SECO cannot be responsible for any change made besides the logo and string customisation. Please, be aware that changing and reprogramming BIOS may led to a not working board.

Please notice that the software is contained in a compressed archive protected with password, please contact your SECO commercial representative for the password.

WWW.SECO.COM

AREZZO



Qseven

MILAN



COM Express

FRANKFURT



SBC

BOSTON



ETX / XTX

BANGALORE



Carrier board

TAIPEI



Services & Solutions

## 2 Programming the logo in the BIOS file

Run the tool H2OEZE-W.

From the “File” menu, choose “Load file”.

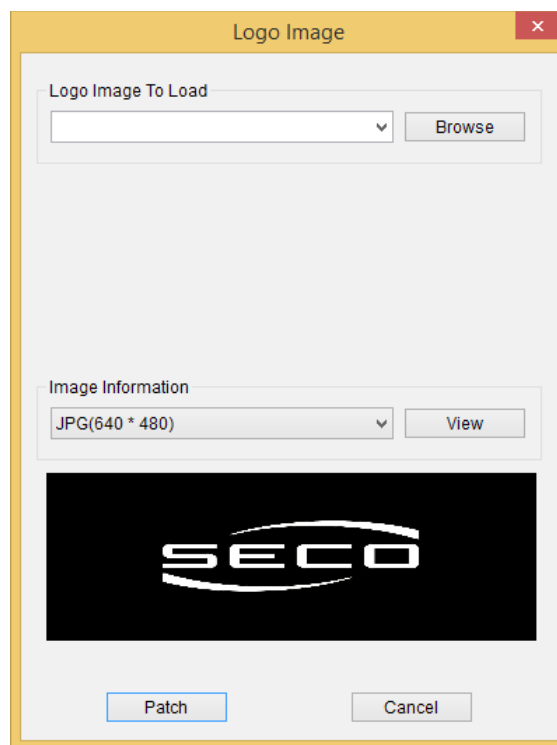
In the window that appears, browse the folders and select the BIOS file that must be modified.

Now, a dialog box will show some information related to the BIOS file loaded. Press “OK” to exit.

From the menu “Components”, select “Logo...”

A new dialog box will now appear; it allows customising the background image dimension (JPG or BMP - 640 x 480).

Using the drop-down menu, it's possible to preview the image appearance.



Clicking the “Browse” button, it is possible to choose the JPG image to be used for the customisation.

WWW.SECO.COM

AREZZO



Qseven

MILAN



COM Express

FRANKFURT



SBC

BOSTON



ETX / XTX

BANGALORE



Carrier board

TAIPEI

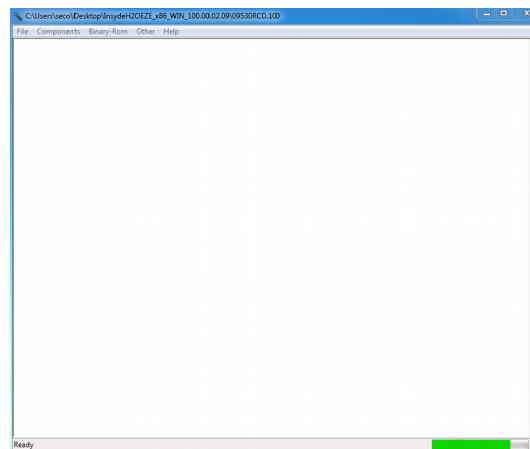


Services & Solutions



Once the Logo image has been correctly selected and set, it is possible to press the “Patch” button.

A green progress bar will inform when the replacement of the logo image has been completed.



It is now possible to save the modified BIOS file. Select “File” menu, then “Save as” and type a name for saving the customised BIOS file; the green progress bar will inform when the saving is completed.

It is now possible to close the H2OEZE-W tool.

Note: The maximum supported logo resolution size is 1024x768 or equal to the LVDS resolution if it is lower than 1024x768. To display the logo image enable “Display Boot Logo” in the “Boot” tab from Setup Configuration Utility.

WWW.SECO.COM

AREZZO

MILAN

FRANKFURT

BOSTON

BANGALORE

TAIPEI



Qseven



COM Express



SBC



SMARC



ETX / XTX



Carrier board



Services & Solutions

### 3 BIOS string customization

Run the tool H2OEZE-W. From the “File” menu, choose “Load file”.

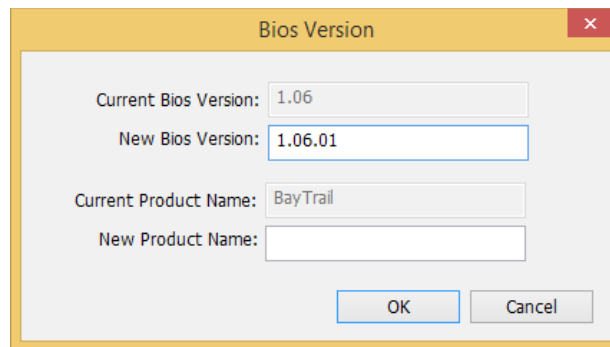
In the window that appears, browse the folders and select the BIOS file that must be modified.

Now, a dialog box will show some information related to the BIOS file loaded. Press “OK” to exit,

From the menu “Binary-Rom”, select “Bios Version”.

A dialog box will now appear, showing information about the Current Bios Version and the Current product name.

It is now possible to change both the Bios Version string and the Product name string, as shown in the following picture.



The Bios Version string will be visible in the BIOS setup configuration utility from the "Main Page" menu, in the section "Bios Version". It will be also available to all OSeS in the SMBIOS data structure "Bios Information", field "Version".

It is now possible to save the modified BIOS file.

Select “File” menu, then “Save as” and type a name for saving the customised BIOS file.

The green progress bar will inform when the saving is completed.

**It is now possible to close the H2OEZE-W tool.**