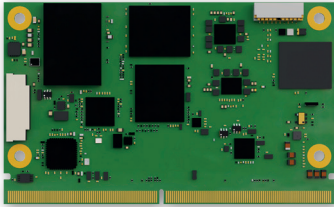




## SOM-SMARC-QCS6490

SMARC® 2.1.1 module powered by Qualcomm® QCS6490 Processor

### SMARC® module for high performance low power applications powered by the QCS6490 processor



#### HIGHLIGHTS

|   |  |
|---|--|
| <b>CPU</b><br>QCS6490 processor               | <b>CONNECTIVITY</b><br>2x Gigabit Ethernet |
| <b>GRAPHICS</b><br>FHD+ Qualcomm® Adreno™ 643 | <b>MEMORY</b><br>LPDDR5-6400 up to 12GB    |

Available in Industrial Temperature Range



#### MAIN FIELDS OF APPLICATION



Medical



Safety &  
Surveillance



Industrial  
Automation

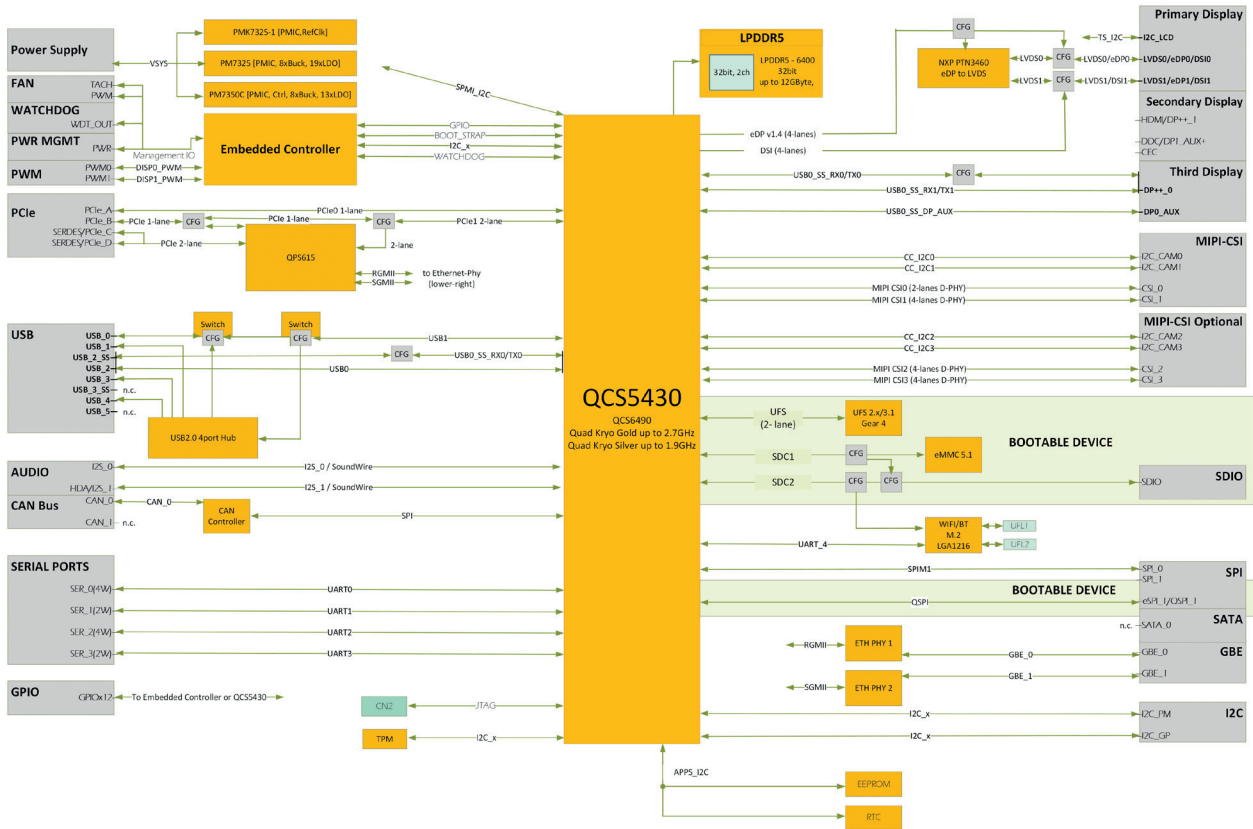


Digital Signage

#### FEATURES

|                  |   |  |  |
|------------------|---|--|--|
| Processor        | 1x Arm® Cortex®-A78 @2.7 GHz, 3x Arm® Cortex®-A78 @2.4 GHz, and 4x Arm® Cortex®-A55 @1.8 GHz                          | Other Interfaces   | I2C<br>Ultra Low Power RTC<br>2xPWM                                    |
| Memory           | Soldered-down LPDDR5-6400 memory, up to 12GB total, 32-bit interface 2 channels                                       | Security   | Optional TPM 2.0 on-board  |
| Video Interfaces | LVDS dual channel 18/24bit, eDP V1.4, MIPI DSI 4 lanes, Display Port through USB 3.1 Type C                           | Embedded Controller Functionalities  | FAN<br>Watchdog<br>Power Management<br>I/O Signals                     |
| Video Resolution | Primary display: FHD+ @120 fps<br>Secondary display: up to 4k Ultra HD @60Hz  | Power Supply   | 5V DC (+5V Standby opt)  |
| Graphics         | Qualcomm® Adreno™ 643L  | Operating System   | Microsoft Windows 11 IoT Enterprise<br>Yocto (Linux 64 Bit)<br>Android |
| Mass Storage     | eMMC 5.1 drive soldered on-board, up to 64GB (boot device)<br>SD 4-bit interface (boot device) opt. UFS 2.x/3.1 flash | Operating Temperature*   | 0 ÷ +60°C (Commercial Range)<br>-30 ÷ +85°C (Industrial Range)         |
| Networking       | 2x Gigabit Ethernet interfaces<br>Opt. Wi-Fi + BT5.0  | Dimensions   | 82 x 50 mm   |
| USB              | 1x USB 3.1, 1x USB 2.0 OTG, 1x USB 2.0 or 4x USB 2.0 (Hub option)   | *Measured at any point of SECO standard heatspreader for this product, during any and all times (including start-up). Actual temperature will widely depend on application, enclosure and/or environment. Upon customer to consider application-specific cooling solutions for the final system to keep the heatspreader temperature in the range indicated. |  |
| PCI-e            | PCIe lanes Gen3: 2 ports x1 lanes, 1 port x2 lanes (QPS615)   |  |  |
| Camera Interface | 2x 4-Line MIPI CSI, with ISP support  |  |  |
| Audio            | 2x I2S  |  |  |
| Serial Ports     | 2x UART (RX/TX/RTS/CTS), 2x UART (RX/TX)  |  |  |
| CAN Bus          | 1xCAN via SPI   |  |  |

## BLOCK DIAGRAM



Qualcomm branded products are products of Qualcomm Technologies, Inc. and/or its subsidiaries.

# Streamline and expedite your edge computing implementations

## EDGEHOG OS

A flexible operating system that adapts to your needs, thanks to the customization tool and Docker support. Reliability and security are built-in through a dual-partition system and native integration with Exein's robust AI-based protection.

## DATA ORCHESTRATION

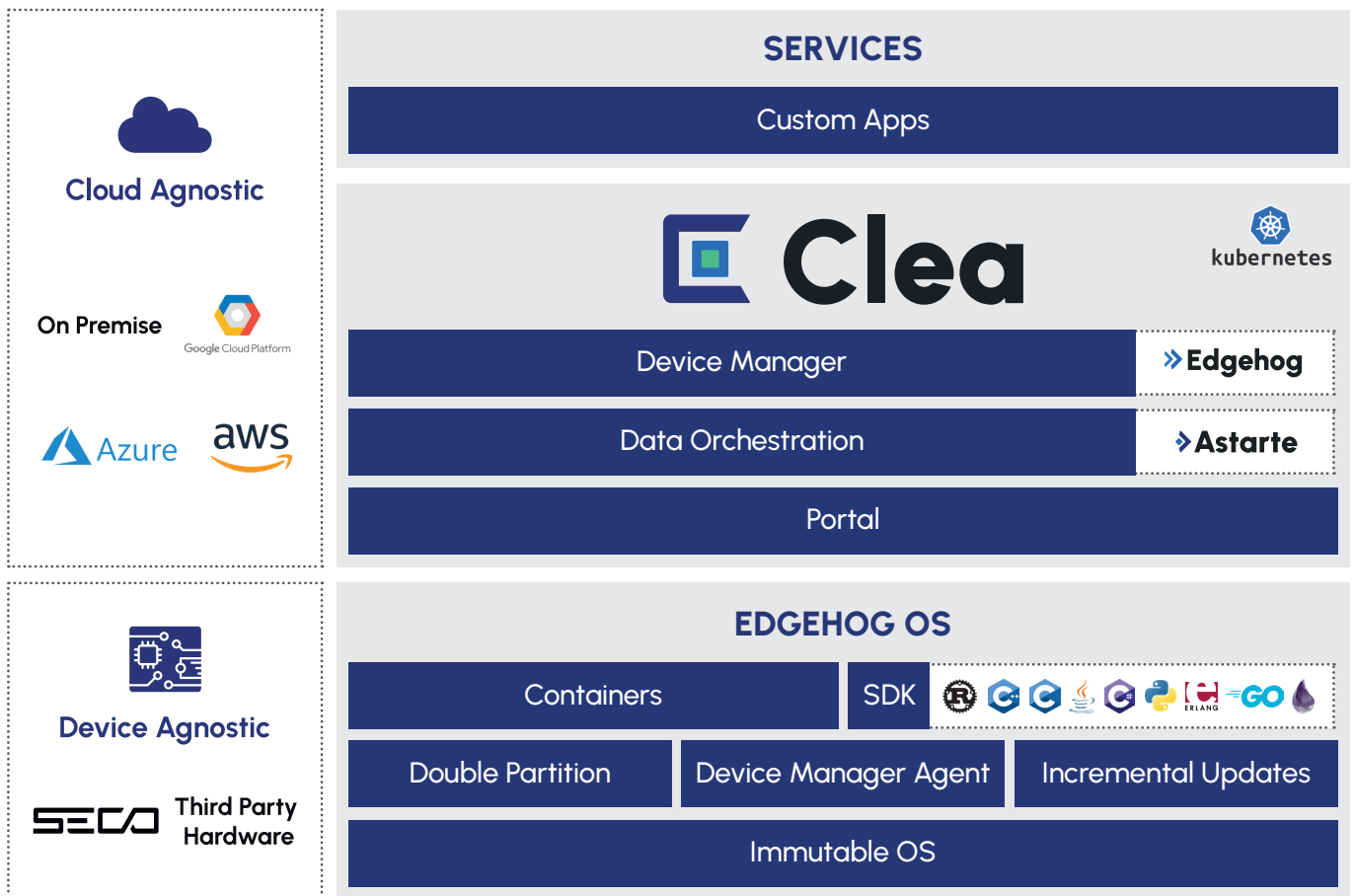
Integrate third-party services, simplify data flows and analysis, and enhance business efficiency by enabling easy and fast utilization of AI.

## DEVICE MANAGER

Update, configure, and manage remote devices. Optimize time and costs to maximize operational efficiency and security without the need for costly field interventions.

## PORTAL

Analyze data from remote devices, customize the user experience with applications tailored to user needs, and manage user rights, company access, and tenant privileges.



Scan to know more about our solution

EDGEHOG OS



CLEA DOCS

