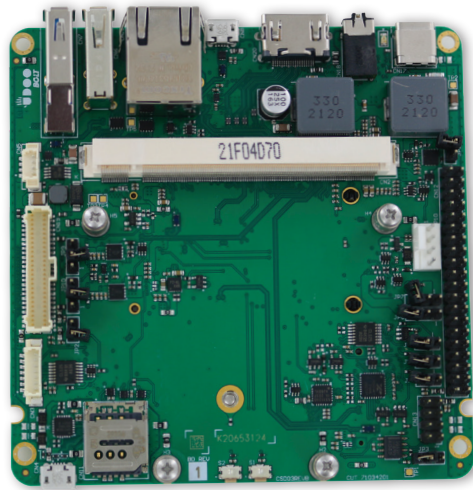




**Carrier-Q7-D03**

Carrier Board for Qseven® and µQseven® Rev 2.1 Modules in embedded NUC™ Form factor

**Flexible Qseven compliant Carrier board in embedded NUC™ Form factor**



**HIGHLIGHTS**

- embedded NUC™ Form factor for Qseven® and µQseven® Rev 2.1 Modules



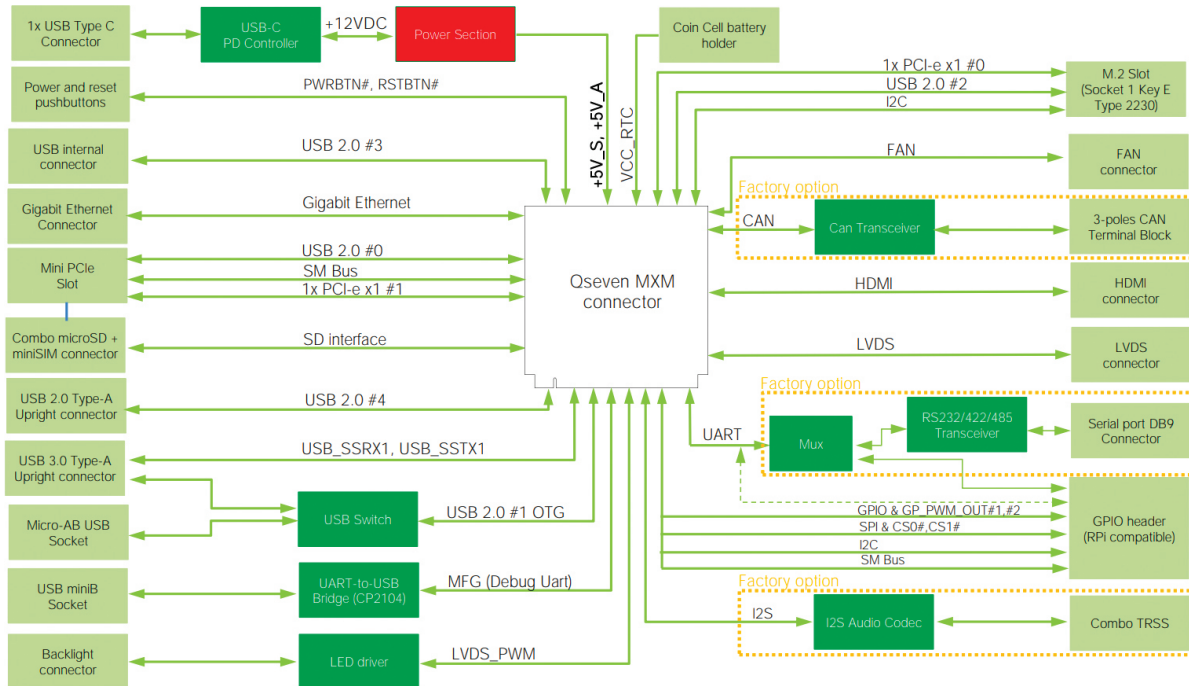
**FEATURES**

	Video Interfaces	LVDS Dual Channel 24-bit + backlight connector HDMI® Connector		Power Supply	12V <sub>DC</sub> through USB Type-C connector Coin cell battery Holder for CMOS and RTC
	Mass Storage	microSD Slot		Operating Temperature*	0°C ÷ +70°C
	Networking	1 x Gigabit Ethernet connectors 1 x Mini-PCIe Slot for WWAN Modem Modules, connected to on-board microSIM slot		Dimensions	embedded NUC™ compliant: 101.6 x101.6 mm (4"x4")
	USB	1 x USB 2.0 Host port on Type-A socket 1 x USB 3.0 Host ports on Type-A socket shared with USB 2.0 OTG Client 1 x USB 2.0 OTG port on micro-AB socket shared with USB 3.0 Host 1 x USB 2.0 Host port on internal connector 1 x USB 2.0 Host port on M.2 Socket 1 Key E Slot 1 x USB 2.0 Host port on mini-PCIe Slot	*All carrier board components must remain within the operating temperature at any and all times, including start-up; carrier operating temperature is independent of the module installed. Please refer to the specific module for more details. Actual temperature will widely depend on application, enclosure and/or environment. Upon customer to consider specific cooling solutions for the final system.		
	PCI-e	1 x PCIe x1 lane on M.2 Socket 1 Key E Slot 1 x PCIe x1 lane on Mini-PCIe Slot			
	Audio	Optional combo TRSS audio connector Mic in/Stereo out			
	Serial Ports	Optional 4-wires RS-232 / RS-422 / RS-485 configurable serial port on pin header			
	Other Interfaces	Optional 1 x CAN port on pin header 1 x PCIe x1 lane on M.2 Socket 1 Key E Slot 1 x PCIe x1 lane on Mini-PCIe Slot 1 x 40 pin connector for I2C, SPI and General Purpose I/O, pinout compatible with the Raspberry Pi - GPIO Connector 1 x LED driver connector 4-wires FAN connector configurable microSIM Slot for miniPCIe Modem Debug USB port on micro-AB socket MFG connector for JTAG programming of Qseven® module			

# Carrier-Q7-D03

Carrier Board for Qseven® and µQseven® Rev 2.1 Modules in embedded NUC™ Form factor

## BLOCK DIAGRAM



# Streamline and expedite your edge computing implementations

## EDGEHOG OS

A flexible operating system that adapts to your needs, thanks to the customization tool and Docker support. Reliability and security are built-in through a dual-partition system and native integration with Exein's robust AI-based protection.

## DATA ORCHESTRATION

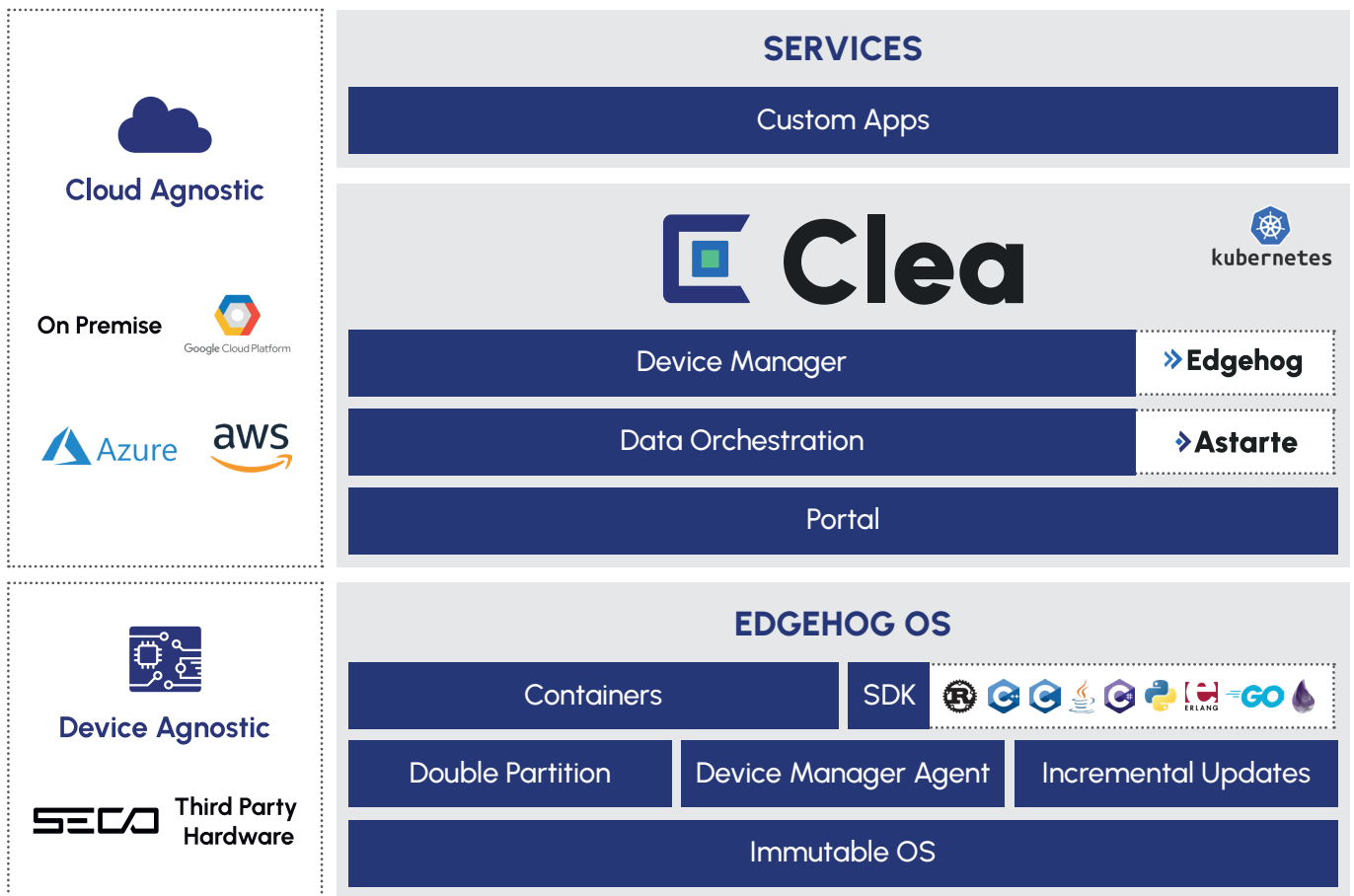
Integrate third-party services, simplify data flows and analysis, and enhance business efficiency by enabling easy and fast utilization of AI.

## DEVICE MANAGER

Update, configure, and manage remote devices. Optimize time and costs to maximize operational efficiency and security without the need for costly field interventions.

## PORTAL

Analyze data from remote devices, customize the user experience with applications tailored to user needs, and manage user rights, company access, and tenant privileges.



Scan to know more about our solution

EDGEHOG OS



CLEA DOCS

